

# **User Manual**

ContinoProva

Hello World Example

## Content

<b>1</b>	<b>WHAT IS CONTINOPROVA?</b> .....	<b>4</b>
<b>2</b>	<b>INSTALLATION</b> .....	<b>4</b>
2.1	Installation of ContinoProva Server .....	4
2.2	Installation of ContinoProva Client .....	5
2.3	Installation of ContinoProva Demo Environment .....	5
<b>3</b>	<b>THE HELLO WORLD EXAMPLE</b> .....	<b>5</b>
3.1	Start and connect ContinoProva Server.....	5
3.2	Start the HelloWorld Example.....	6
3.3	The HelloWorld project .....	7
3.3.1	Test task “GetDate” .....	8
3.3.2	Test task “ShowDate” .....	9
3.4	Executing the test .....	9
3.5	The report .....	10
<b>4</b>	<b>SUPPORT AND CONTACT</b> .....	<b>11</b>

## Pictures

- Picture 1: Edit server preferences..... 4
- Picture 2: ContinoProva Server running..... 6
- Picture 3: Add ContinoProva Server..... 7
- Picture 5: Test structure of the example project <HelloWorld>..... 8
- Picture 6: Test task "GetDate" ..... 8
- Picture 7: Test task "ShowDate" ..... 9
- Picture 8: Manual Step pop-up window ..... 10
- Picture 9: Test report ..... 10

## 1 What is ContinoProva?

ContinoProva is a testing platform which is designed to support automated testing. You can easily link development and testing tools to the platform and run tests across the tools.

By doing so, the tester controls all connected tools remotely using only the graphical user interface of ContinoProva.

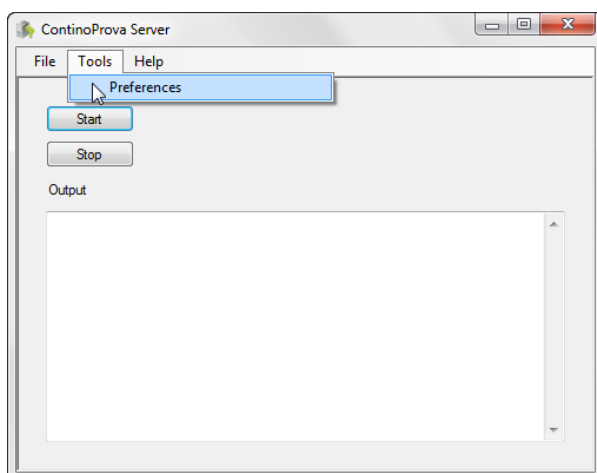
## 2 Installation

The evaluation version of ContinoProva comprises of a server setup and a client setup file. Both of them can be installed and run on one computer or on different computers in a network.

### 2.1 Installation of ContinoProva Server

Run <ContinoProva\_Server\_Setup.exe> on the computer on which you want to install the server component and follow the installation instructions.

The communication between server and client is realized by TCP/IP. If the default ContinoProva Port (9090) is occupied, set a different port by choosing *Tools* → *Preferences* from the menu.



Picture 1: Edit server preferences

## 2.2 Installation of ContinoProva Client

Run <ContinoProva\_Setup.exe> on the computer you want to install the client component on and follow the installation instructions.

For Windows 7 users: Make sure that you run the ContinoProva client as administrator.

## 2.3 Installation of ContinoProva Demo Environment

Run the <ContinoProva Demo Environment.exe> file on your computer and follow the instructions on the screen. The Demo Environment will install the HelloWorld Example and the BlinkTest Example. To learn more about the BlinkTest Example please refer to the BlinkTest Simulation Manual.

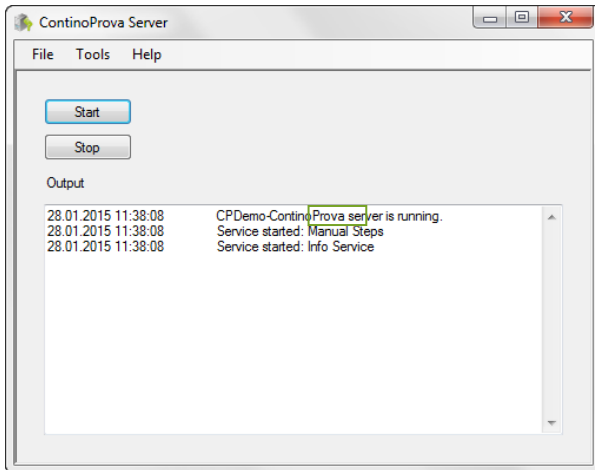
# 3 The Hello World Example

The purpose of this simple example is to quickly gain an overview of ContinoProva. You will see how tests are structured, specified, executed and reported. Of course, in real projects the tests will be much more sophisticated using diverse development and testing tools. In order to have a general example which can be executed easily (without the need for installing other tools and their licenses), we have restricted the example to use only two simple services.

## 3.1 Start and connect ContinoProva Server

### 1. Start the ContinoProva Server

Open ContinoProva Server and click on the button labelled [Start]. The output should inform you that two services have been started and that your server is running. The name of the Server is marked in the green rectangle.

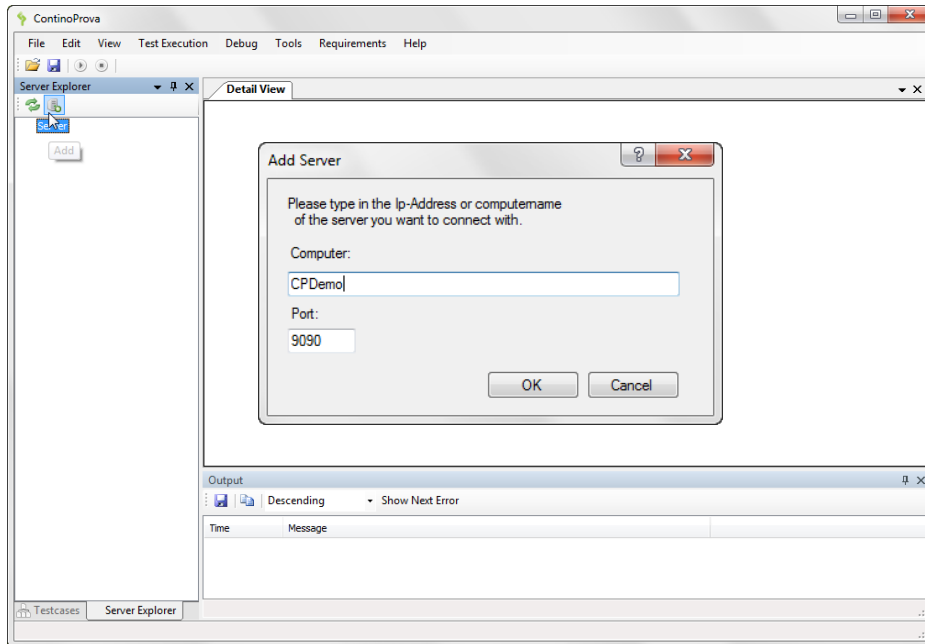


**Picture 2: ContinoProva Server running**

### 3.2 Start the HelloWorld Example

The installation process will create a ContinoProva folder in the Windows Start menu. In order to run the HelloWorld Example start ContinoProva Server and the Start HelloWorld Example file in the folder. ContinoProva Client will be opened and the HelloWorld project will be loaded automatically.

If the Server was not connected automatically to the client, open the Server Explorer from the View menu, click on the right one of the two buttons to open the Add Server dialog. Enter the name of your ContinoProva server (marked in the screenshot of Picture 3) and click [OK].



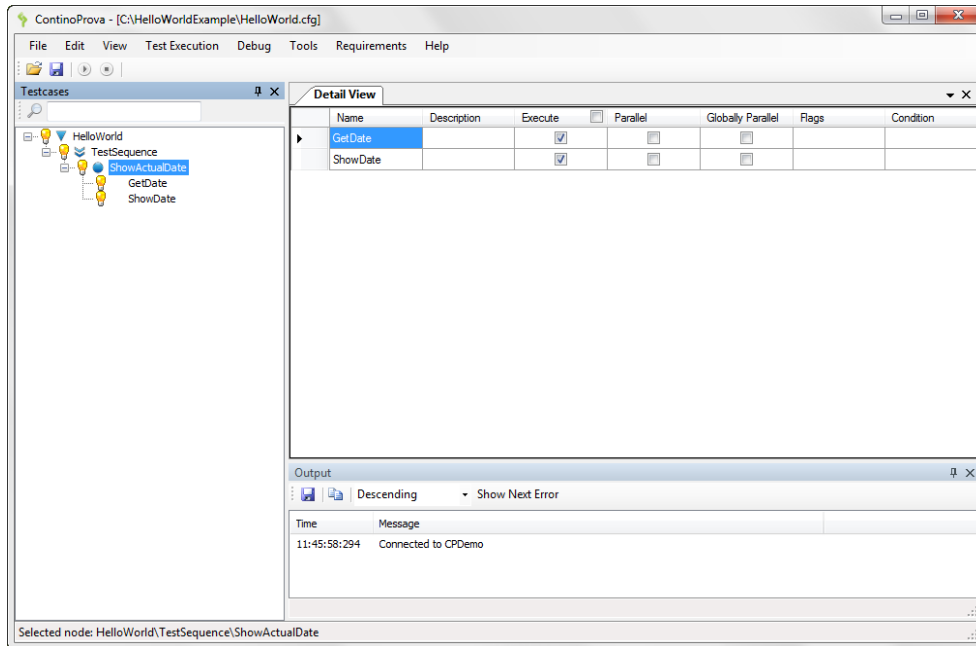
**Picture 3: Add ContinoProva Server**

The server should now appear in the server tree. You can expand the tree to check that the services running on the server are imported. Now close the Server Explorer.

### 3.3 The HelloWorld project

The example project HelloWorld includes a basic test which checks the current date.

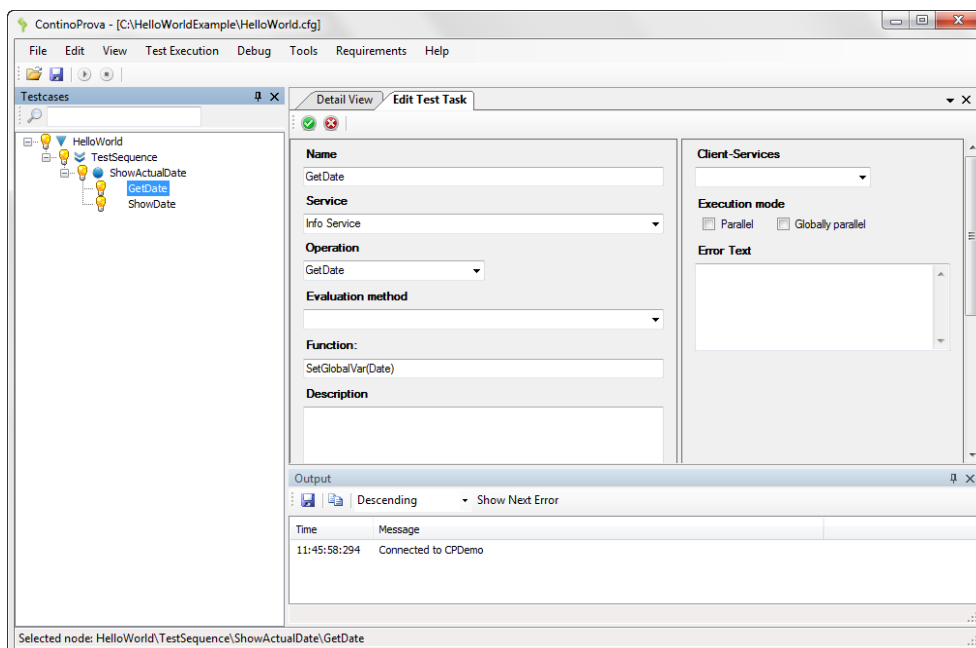
After being loaded, the project will be shown in the Testcases explorer in form of a tree view containing the test group “HelloWorld” and the test sequence. The test sequence contains only one test step - “ShowActualDate” - which is divided into two test tasks “GetDate” and “ShowDate”.



Picture 4: Test structure of the example project <HelloWorld>

### 3.3.1 Test task “GetDate”

Click on test task “GetDate”. The test task “GetDate” uses the Info Service. The operation “GetDate” reads the system date. With the function SetGlobalVar(Date) the system date is assigned to the global variable “Date”.



Picture 5: Test task "GetDate"

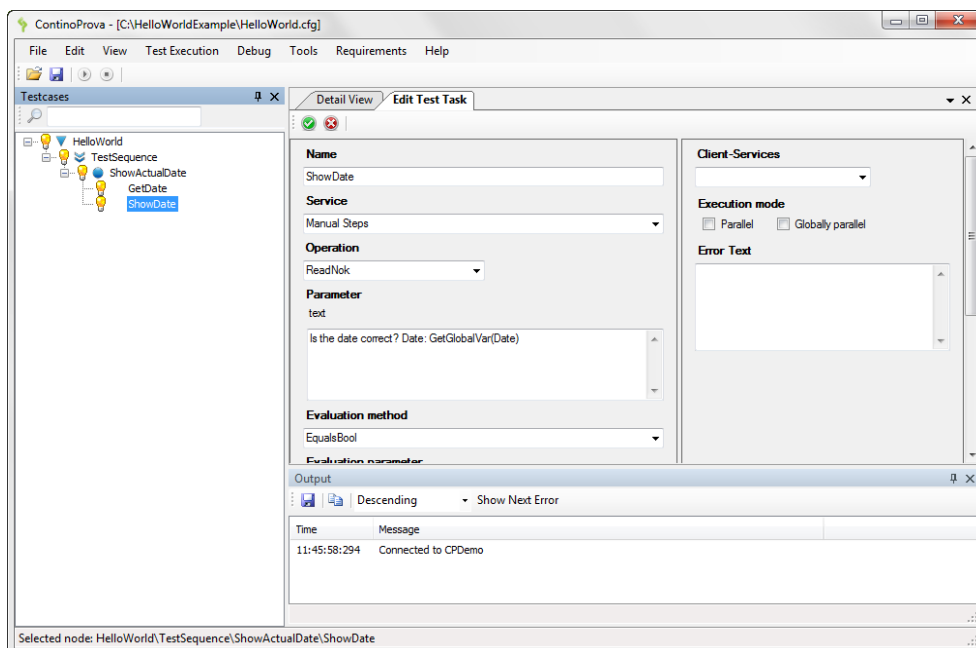


### 3.3.2 Test task “ShowDate”

The test task “ShowDate” uses the service “Manual Steps”. This service is implemented to support test activities which need to be manually operated by the tester. In our example the tester should verify the system date.

By the operation “ReadNok” a window with the buttons “OK” and “NOK” will pop up during test execution.


The evaluation method “EqualsBool” compares the testers answer with the expected evaluation parameter “True”. This means that the test is successful if the tester clicks OK. If the tester clicks NOK, the test fails.



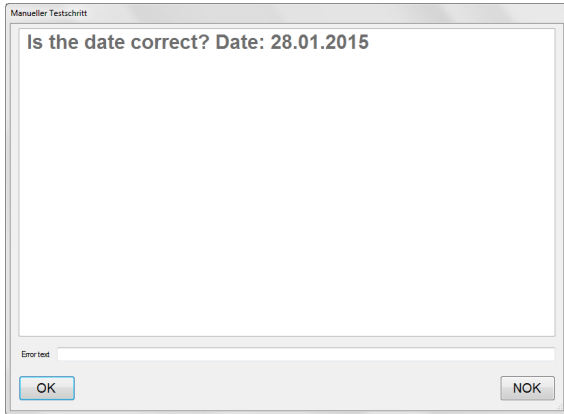
Picture 6: Test task "ShowDate"

## 3.4 Executing the test

To execute the test you can do either one of the following:

- Select *Test Execution* → *Execute – Stop On Error* from the menu.
- Press the short cut F5.
- Click the symbol button .

The window with the question “Is the date correct? Date: xxx” will pop up. The tester should answer with either OK or NOK by clicking the corresponding button.



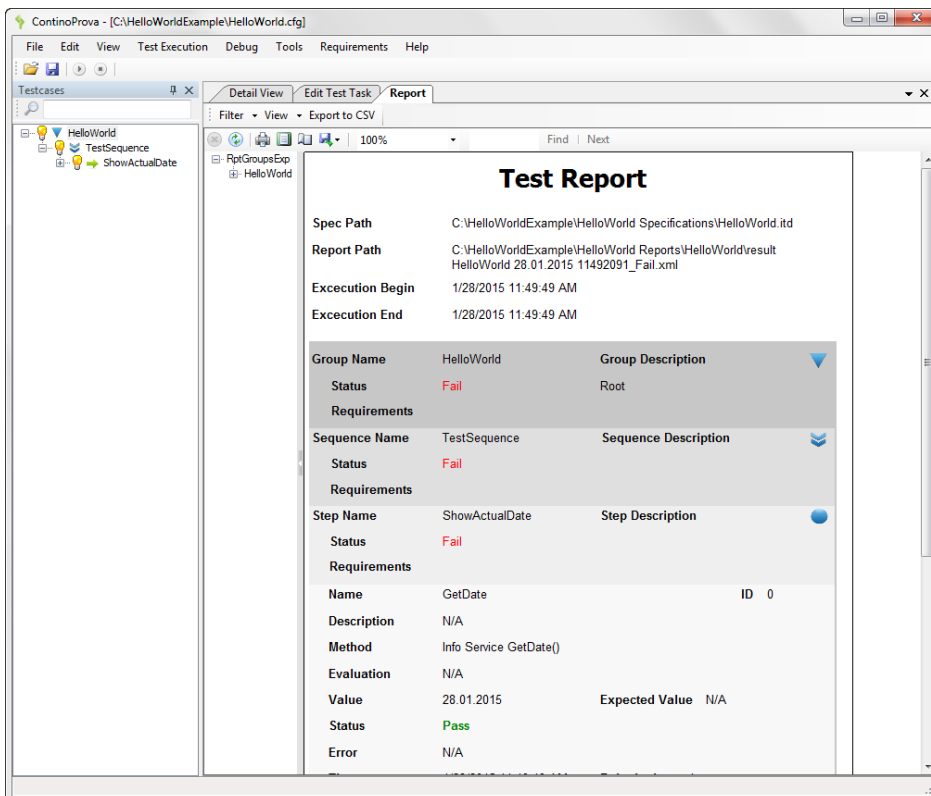
Picture 7: Manual Step pop-up window

### 3.5 The report

A window will pop up when test execution is finished. Test results are summarized in the test report. To open the report, choose *Tools* → *Show Report* from the menu.

As we chose “NOK”, the test failed.

By clicking on a test element name in the report you will be directed to the corresponding test element in the tree of the Testcases explorer.



Picture 8: Test report

## 4 Support and Contact

More information about ContinoProva and support can be obtained from the ContinoProva team at the ITPower Solutions GmbH:

Email: [support@continoprova.de](mailto:support@continoprova.de)

Address: ITPower Solutions GmbH  
Kolonnenstraße 26  
10829 Berlin  
Germany

Phone: +49 (0)30 6098501-0

Fax: +49 (0)30 46799891

Web: [www.continoprova.de](http://www.continoprova.de)